

Testing the absorption of liquids by building materials



PLEYER'S Test Tube (German patent)

Designed was a simple device based on the Karsten test tube. The task in hand was solved by means of an additional liquids chamber surrounding the building material surface proper (circular area), in the shape of a supplementary circular ring (refer to illustration).

The PLEYER'S Test Tube offers the possibility of testing in a non-destructive manner, and with sufficient precision, the penetrational behaviour of liquids into building materials. Also possible is the determination of the quality of surface-parallel penetration processes.

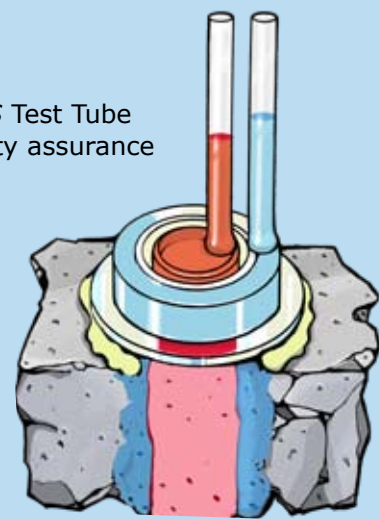
Apart from this, the graduation (ltr./m²) applied to the gauge pipe provides a direct indication of the water absorption coefficient of the building material.

When applying the so-called "root-t"-law, the water absorption coefficient of the building material (dimension $l/(m^2 \sqrt{h})$) may be determined after a period of only 15 minutes.

For this purpose the reading of the amount of water having penetrated into the building material is to be multiplied by a factor of 2.

Furthermore, the PLEYER'S Test Tube may also be used for quality assurance purposes of impregnation processes (water repellent finishing). In this case, for instance, the water repellent finishing is applied as the test liquid.

The degree of absorption of the subsurface may be estimated and, by referring to the functional correlation of the absorbed amount/penetration depth, may be more easily assessed. It is possible to analyse the long-term effectiveness of water repellent finishes by means of the determined absorbed amount/penetration depth of water or solvents in combination (as test liquid).



PLEYER'S Test Tubes are supplied in various sizes:

Please notice that you have to choose a test tube which inner circle surface is at least 3 times greater than the graine diameter!



For plaster, mortar, masonry mortar, bricks, calcareous sandstone, porous concrete, natural stone and flooring plaster

(max. graine diameter 8 mm):

Vertical surfaces dia. 30 mm: **(PP 30S) < 185,00 €**

Horizontal surfaces dia. 30 mm: **(PP 30W) < 160,00 €**

For flooring plaster and concrete

(max. graine diameter 16 mm):

Vertical surfaces dia. 50 mm: **(PP 50S) < 248,00 €**

Horizontal surfaces dia. 50 mm: **(PP 50W) < 235,00 €**

The test tubes are supplied singly, packed in a carton made from foamed material. This carton also holds a separate folding box containing 6 putty strips for securing purposes.

To ensure safe transportation of the PLEYER'S Test Tubes the scope of deliveries comprises the following:

Aluminium-framed **wooden case** 38 x 45 cm, 22 cm high. The wooden case is fitted with compartments of foamed material accepting test tubes of any size.

The wooden case also contains three capped PE-bottles **(PP-S1)** for the test liquid.

Supplied together with the PE-bottles is a twin spraying hose **(PP-S2)** provided with a screw cap facilitating the filling operation.

The case furthermore contains a hinged instruction manual detailing the test procedure when using the PLEYER'S Test Tubes. Also supplied is a flat brush for preparing the surfaces to be tested and a knife and spatula for removing the PLEYER'S Test Tubes secured to the masonry.

Wooden case (PP KF) <

with accessories, without test tubes **410,00 €**

Miscellaneous parts (PP-K) < Putty tape

6 strips, 25 cm long, (sufficient for securing a test tube twice) **4,10 €**

(PP-S) < Test bottle

Capacity 500 ml, provided with twin spraying hose and cover **17,50 €**

(PP-S1) < Test bottle

with closed cover without spraying hose **4,60 €**



Water Penetration Tester of Glass

packed individually in a box, complete with one roll of white plastic putty (approx. 100 g). With a scale in ml, approx. 20 ml capacity.

horizontal surfaces: (1802) < 18,50 €

vertical surfaces: (1801) < 18,50 €

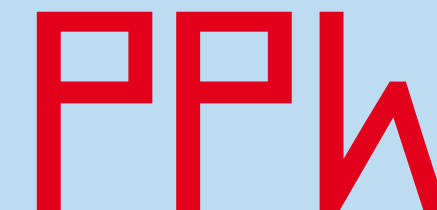
Water Penetration Tester Set (1800 S) <

complete with 1 water penetration tester (1801) and (1802) and one roll of white plastic putty, packed in a pasteboard box for transport. **41,00 €**

Water Penetration Tester Set (1801 S) < 41,00 €
as above, but with 2 water penetration testers (1801)

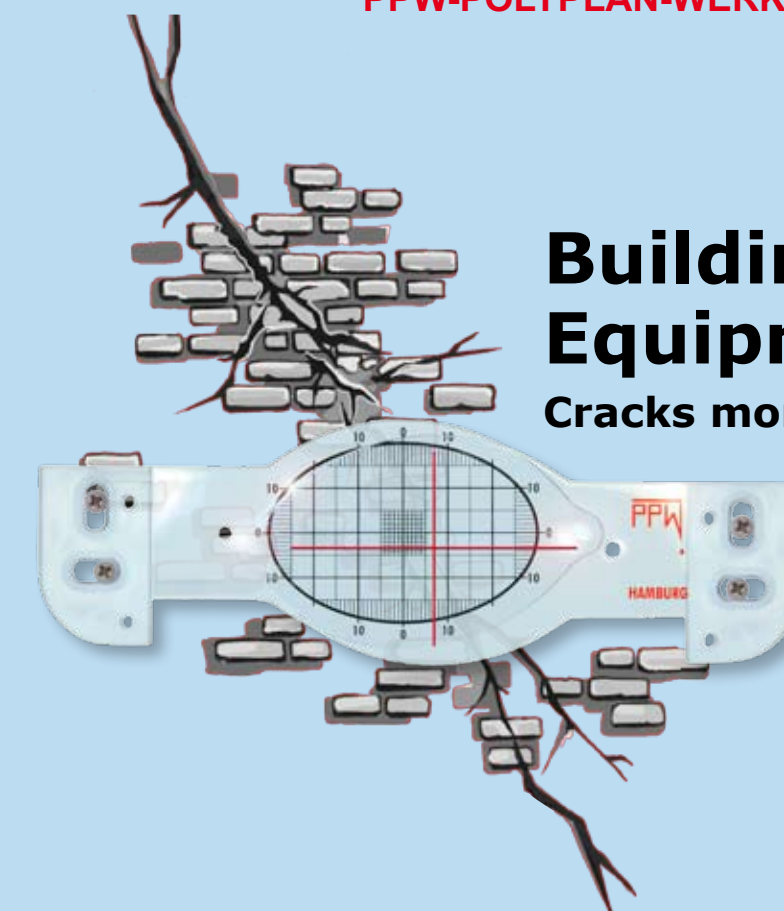
Water Penetration Tester Set (1802 S) < 41,00 €
as above but with 2 water penetration testers (1802)

PPW-POLYPLAN-WERKZEUGE GMBH



Building-Examination Equipment

Cracks monitoring and measurement



Crack-monitor (1395) < for permanent monitoring of crack movements

consists of 2 plates, produced in transparent durable acrylic plastic. The bottom plate has a scale, which is calibrated in millimetres and the overlapping plate marked with a red graticule.

The crack-monitor will be fixed with screws or adhesive across the crack on the wall. As the crack opens or closes, the plate with the red graticule moves proportional to the other plate with the scale.

These movements can be read at the calibration scale and recorded on a foil of the enclosed record folder (1395F), accuracy 0.5 mm.



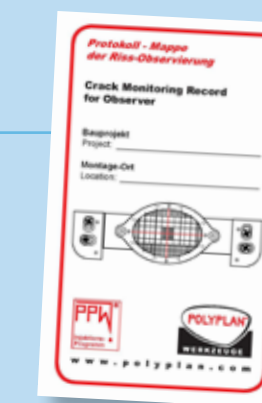
Crack-monitor (1395) < with 10 loose foils for recording the crack movements with the crack-monitor (1395F)

49,80 €

Crack monitoring record folder (1395F) <

with 10 loose foils for recording the crack movements with the crack-monitor (1395)

8,20 €



PPW-POLYPLAN-WERKZEUGE GMBH

Riekbornweg 20 • D-22457 Hamburg • Phone: +49 (0)40 - 55 97 26 -0 • Telefax: +49 (0)40 - 55 97 26 - 65

PPW-POLYPLAN-WERKZEUGE GMBH

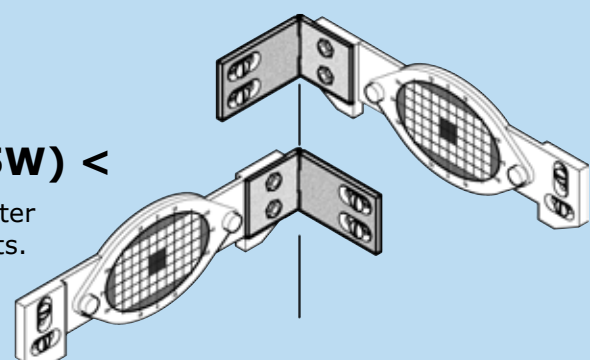
Riekbornweg 20 • D-22457 Hamburg • Phone: +49 (0)40 - 55 97 26 -0 • Telefax: +49 (0)40 - 55 97 26 - 65

PPW-POLYPLAN-WERKZEUGE GMBH

Riekbornweg 20 • D-22457 Hamburg • Phone: +49 (0)40 - 55 97 26 -0 • Telefax: +49 (0)40 - 55 97 26 - 65

Angle-adapter for crack monitoring (1395W) <

For monitoring cracks in external or internal corners the angle-adapter (1395W) is fitted to the crack-monitor (1395) with 2 screws and nuts. Then the cracks can be observed like described for the crack monitor (1395).



If three dimensional movements are possible, e.g. in internal corners, 2 opposite crack monitors are employable.



Angle-adapter for crack monitoring (1395W) <

complete with screws + nuts, fastening-screws and plugs

22,00 €



Floor-crack monitor (1197) <

can be set to monitor settlements of floors and walls.

Floor-crack monitor (1197) with 4 fastening-screws + plugs + record booklet with 10 leaflets of pergament paper.

43,00 €

Record booklet for crack monitoring on floors (1197P) <

including 10 record leaflets of pergament

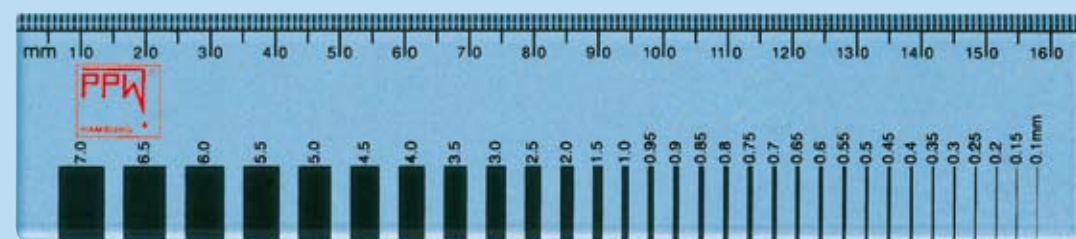
5,50 €

Crack width gauge (1191) <

made of acrylic, supplied in a case, with 2 scales:

1. Unit of measurement is indicated for cracks from 0.1 to 7.0 mm.
2. Calibrated to edge of scale which simplifies crack measurement in corners.

22,00 €

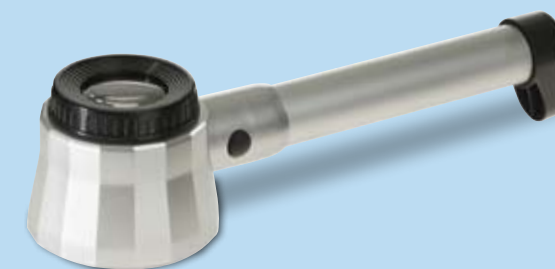


Measuring magnifiers

will be used for measuring cracks and joints optimally. The magnifier consists of a magnifying unit and an illuminating unit.

It has an easily read graduated scale in mm (0.1 mm graduation).

The measuring magnifier is supplied packed in a useful case including 2 batteries (1.5 V UM-2).

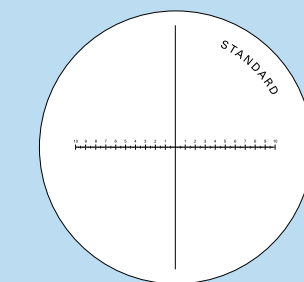


(1193) magnification 8 times

(1193) < Measuring magnifier with magnification 8 times

Scale 10-0-10 mm

61,00 €



The measuring magnifier (1190) and (1192) has additionally an adjustable ring for a precise controlling of the focus. Furthermore the magnifier can be used apart from the illuminating unit.

(1190) < Measuring magnifier with magnification 7 times

Scale 10-0-10 mm

135,00 €



(1190) magnification 7 times,
(1192) magnification 10 times

(1192) < Measuring magnifier with magnification 10 times

Scale 15-0-15 mm

199,00 €



PPW-POLYPLAN-WERKZEUGE GMBH

Riekbornweg 20 Phone: +49 (0)40 - 55 97 26 - 0
D-22457 Hamburg Telefax: +49 (0)40 - 55 97 26 - 65
E-Mail: ppw@polyplan.com Internet: www.polyplan.com



Beside this program we deliver **tools** for:

- liquid plastic coating
- glas-fibre reinforced processing
- building protection
- sealing

Please ask for our actual tool catalogue or visit our homepage:
www.polyplan-werkzeuge.de



We don't drive in - we're just setting firm
Reconstruction of buildings without additional cracking

Please ask for our injection-program or visit our homepage:
www.kunststoffpacker.de

Recognition and Estimation of the adhesion of paint coatings

Examination-Set for old and new coatings on beton (1290) <

The examination-set (1290) should help you by the recognition of the used basis of a coating and the estimation of the adhesion.

If you want to determine the structure of the coating, first the pad-check will be carried out. Hereby you drip dilution C on a wadpad and put it onto the coating. After a short period of time you can take conclusions, according to the residues on the wadpad, about the structure of the coating.

In the second step you can estimate the adhesion from the coating according to DIN EN ISO 2409 through the grid-cutting-method.

Hereto you cut the ground through the grid-cutting-ruler each 4 mm crossing. The residual structure of the ground will be compared to a list of grid-cutting-parameters, so you can take conclusions about the adhesion of the ground.

Both tests should be a assistancelly for the following preparation of the surface and finally for your decision of the medium for further processing.



Examination-Set for old and new coatings packed in a plastic box (1290) <

Complete with wadpads and dilution C, grid-cutting-ruler, knife, scotch tape, brush and ball point pen for documentation. We also deliver a handbook, using instructions and drawing-form for documentation of the results.

142,00 €

Gridcutting-ruler (1291) < (German patent)

single, made of stainless steel.

For determination from adhesion of coatings according to DIN EN ISO 2409

48,75 €

